

# MATRIX Running Strip

## 10W/m 24V

### Applications:

Residential and Commercial Applications.

Introducing the latest contemporary LED Strip Lighting trend - MATRIX, PioLED's Running strip light.

Highly customizable, this strip will not only bring you light but atmosphere and entertainment too!

Our 24V/10W Matrix is rated IP65 for indoor and outdoor use, available in 3CCT and BLUE, in traditional LED Strip or NEON FLEX casing.

Our newly available NEON FLEX casing provides a Dot-Free and easy mounting solution. It can be used in many applications with no design limitations due to it's flexibility. If you require seamless corners, simply pair them with our MATRIX accessory - Aluminium Clips for perfect 90-degree angles.

Customizable via remote control, discover the various lighting modes such as water run, and comet features or use auto feature mode allows you to switch between all modes. Control the speed of your light as well as brightness via the remote control.

The 3CCT (via remote) allows you to control your CCT temperature ranging from 3000K to 6000K.

Each controller will handle 150m max provided every 10m has an additional driver, and amplifier installed.

### Product Performance

**Wattage** 10W/m

#### Colour Temperature & Stock Code Code

- SW401**  
IP65 24V MATRIX RUNNING Strip 3CCT - 1M
- SW402**  
IP65 24V MATRIX RUNNING Strip Blue - 1M
- SWR401**  
IP65 24V MATRIX RUNNING Strip 3CCT - 10M
- SWR402**  
IP65 24V MATRIX RUNNING Strip Blue - 10M
- SW403**  
IP65 24V MATRIX RUNNING Neon Strip 3CCT - 1M
- SW404**  
IP65 24V MATRIX RUNNING Neon Strip Blue - 1M
- SWR403**  
IP65 24V MATRIX RUNNING Neon Strip 3CCT - 10M
- SWR404**  
IP65 24V MATRIX RUNNING Neon Strip Blue - 10M

**Operating Temperature** -20~40°C

**IP Rating** IP65

**Beam Angle** 120°

**Input Voltage** DC24V

**CRI** >83

**Lumen Output** 90lm/w

**Lumen Efficiency** >90

**LED Chips** Epistar 2835

**LED Chips Qty** 120

**Dimmable** Yes

**Note:** Max 150meter Neon/Strip per controller or per an amplifier. Every 10 meters needs a Driver.

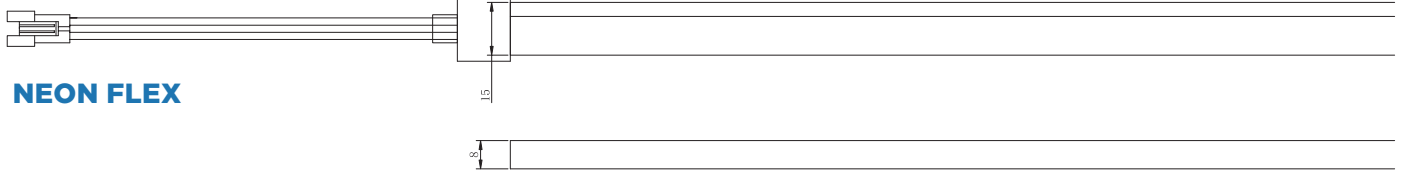
### Physical Characteris-

**Housing Material** PVC

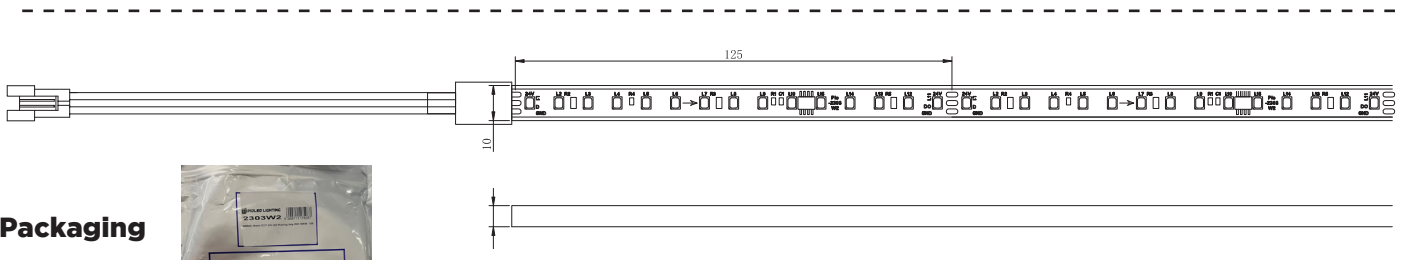
**Product Dimensions** NEON - 16mmx8mm | Strip - 4mmx10mm

**Cable with Connector** 50mm

## Dimension Drawing



## NEON FLEX



## Packaging



Regulatory Qualifications	
<b>Energy Efficiency</b>	A
<b>Certification</b>	CE
Accessories	
<b>Optional accessories</b>	<p>SW400A - Matrix 3CCT White Remote - with Controller</p> <p>SW400B - Matrix Single Colour Black Remote - with Controller</p> <p>SW400C - Matrix 1 to 8 24V Amplifier</p> <p>SW400D - Matrix 5CM 3wire F- connector</p> <p>SW400E - Matrix 5CM 3wire M-connector</p> <p>SW400F - Matrix IP65 Strip End Cap</p> <p>SW400F2 - Matrix IP65 Strip End Cap - No hole</p> <p>SW400G - Matrix Neon0816 5CM Alu 2holes Clips</p> <p>SW400H - Matrix Neon0816 End Cap - with hole</p> <p>SW400 i- Matrix Neon0816 End Cap - no hole</p> <p>SW400J - Matrix Neon0816 AL 2Meter Profile</p>



**SW400A**  
Matrix 3CCT White Remote - with Controller



**SW400B**  
Matrix Single Colour Black Remote - with Controller



**SW400C**  
Matrix 1 to 8 24V Amplifier



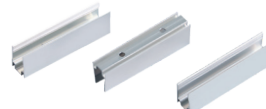
**SW400D**  
Matrix 5CM 3wire F- connector



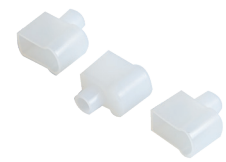
**SW400E**  
Matrix 5CM 3wire M-connector



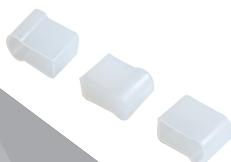
**SW400F**  
Matrix IP65 Strip End Cap with hole



**SW400G**  
Matrix Neon0816 5CM Alu 2holes Clips



**SW400H**  
Matrix Neon0816 End Cap - with hole



**SW400i**  
Matrix Neon0816 End Cap - No hole



**SW400J**  
Matrix Neon0816 AL 2Meter Profile



**SW400F2**  
Matrix IP65 Strip End Cap with No hole