



# Thor Coastal Floodlight

## 100W

### Applications:

Residential and Commercial Applications.

- High Lumen Philips 3030 LED Chip achieving 130lm/W for 20-50W, 140lm/W for 100-200W and 150lm/W for 500W THOR.
- Integrated IP65 constant current LED Power Supply with built in 3-10kV Surge Protection.
- Dynamic thermal management design maximizing heat dissipation ultimately increase the service life of the luminaire.
- Robust design allows for demanding applications.
- Our Premium Range LED Floods come complete with a 1m installation cable.
- 20 to 500W come complete with a breather gland reducing all forms of condensation that may occur due to harsh climatic conditions.
- Aluminium housing with anti-corrosive powder coating finish.
- 316 Stainless steel screws and bolts with 304 Stainless steel reinforced extended bracket.
- White reflector allowing for maximum light distribution.
- Eco-friendly alternative to HID lamps containing no mercury, lead or other harmful chemicals.
- Instant on LED Light Source.

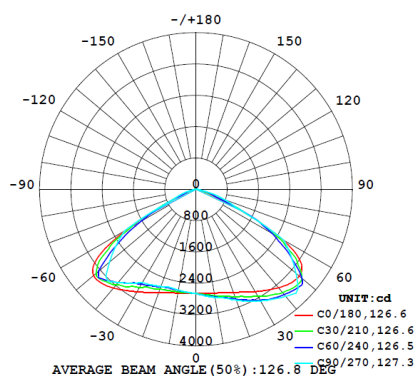
### Product Performance

<b>Wattage</b>	100W
<b>Colour Temperature &amp; Stock Code</b>	6000K <b>F112</b>
<b>Operating Temperature</b>	-30~40°C
<b>Life Span/ LB Rating</b>	L80B20>50000H
<b>IP Rating</b>	IP66
<b>LED Driver Brand</b>	Mean Well
<b>Beam Angle</b>	120°
<b>Impact Protection Grade</b>	IK10
<b>Input Voltage</b>	90V- 300V
<b>Surge Protection</b>	4kV
<b>Power Factor</b>	0.95
<b>CRI</b>	>80
<b>Lumen Output</b>	14 000
<b>Lumen Efficiency</b>	140lm/W
<b>LED Chips</b>	Philips 3030
<b>LED Chips Qty</b>	96
<b>Dimmable</b>	Non-Dimmable
<b>Dimmable Range</b>	-
<b>UGR</b>	33
<b>(Dali/Trailing/Leading)</b>	-

### Physical Characteristics

<b>Weight (kg)</b>	3,12
<b>Housing Material</b>	Die cast Aluminium
<b>Product Dimensions (mm)</b>	364*278*52
<b>Cable Length</b>	1m
<b>Mounting Option</b>	-
<b>Bracket Material</b>	304 Stainless Steel Bracket
<b>Bolts and Screws</b>	316 Stainless Steel

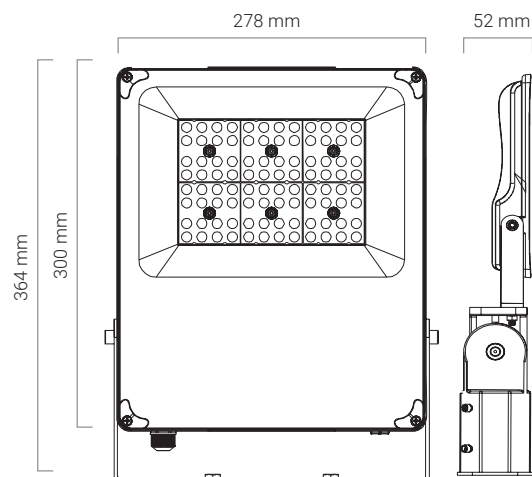
## Luminous Intensity Distribution Diagram



## Packaging



## Dimension Drawing



## Technical Parameters

Input Current	500mA
Output Voltage	48
Flicker Free (Y/N)	Yes
Humidity	40%~80%
Frequency	47-63hz
In Rush Current	60A
Output Current	1.9A
THD	<20%
TA & TC	TA=-30 ~45 °C/TC=65°C
IES (Yes or No)	Yes

## Regulatory Qualifications

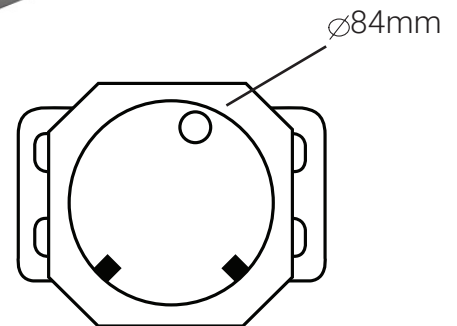
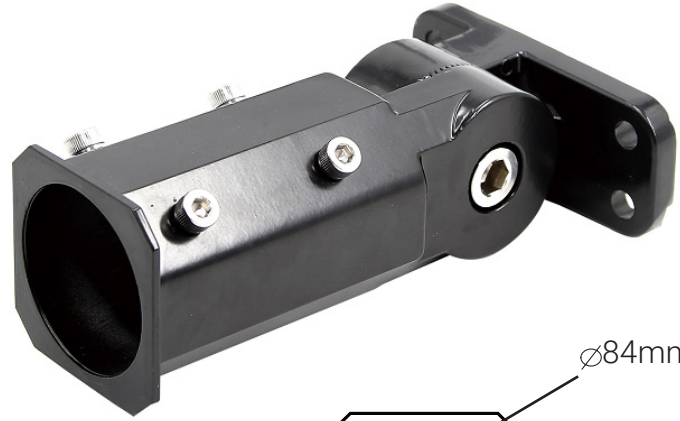
Class Rating	Class I
Energy Efficiency	A
Certification	CE, EMC, IEC60598, RoHS,ISO9001

## Accessories

Optional accessories	Pole Mount Bracket - F025D
Packaging info	
Storage Temp	-40~+60°C
Carton Size (mm)	390*305*315
QTY/CTN	5
Net Weight	14
Gross Weight	15

# Thor Accessories

**F025D - Pole Holder D84**  
**Costal HD 20-240W**  
Aluminium and Stainless  
Steel Bolts  
211mm x 125mm x 75mm



**100W**

